

RFID Apparel Tag



- Model: RC9008
- Material: ABS
- Application: Clothes security anti-theft /Apparel retail/ Clothes inventory,etc
- Weight: 11.7g
- Chip Type: NXP Ucode 8/9/9XE
- Dimensions: 72.75x30.75x20.75mm
- Read Range: 12m



- Model: RC9015
- Material: Paper
- Application: Logistics sorting/Apparel retail and management/ Assets tracking management, etc
- Weight: 1.4g
- Chip Type: Alien Higgs 3
- Dimensions: 110x37x0.35mm
- Read Range: 8m(US),7(EU)



- Model: RC9602
- Material: ABS
- Application: Clothes security anti-theft /Apparel retail/ Clothes inventory,etc
- Weight: 2.7g
- Chip Type: NXP Ucode 8/9/9XE
- Dimensions: φ34x5mm
- Read Range: 6.5m



- Model: RC9604
- Material: ABS
- Application: Clothes security anti-theft /Apparel retail/ Clothes inventory,etc
- Weight: 12.5g
- Chip Type: Impinj Monza R6-P
- Dimensions: 76x28x18mm
- Read Range: 9.5m



- Model: RC9605
- Material: ABS
- Application: Clothes security anti-theft /Apparel retail/ Clothes inventory,etc
- Weight: 12.5g
- Chip Type: Impinj Monza R6-P
- Dimensions: 72.44x29.71x14.85mm
- Read Range: 12m



- Model: RC9606
- Material: ABS
- Application: Clothes security anti-theft /Apparel retail/ Clothes inventory,etc
- Weight: 10.5g
- Chip Type: Impinj Monza R6-P
- Dimensions: 55.56x48.66x21mm
- Read Range: 11m



- Model: RC9028
- Material: Nylon
- Application: Clothes security anti-theft /Apparel retail/ Clothes inventory,etc
- Dimensions: 50 x 35 mm
- Chip Type: Impinj Monza R6-P
- Read Range: 10m(US)
- Read Range: 6m(EU)



- Model: RC9012
- Material: PVC
- Application: Bus tire tracking/ Truck tire tracking/Automobile factory tire tracking,etc
- Weight: 3.4g
- ChipType: Impinj MR6/ NXP U7
- Dimensions: 53x30x1mm
- Read Range: 8.0m(US),7.0(EU)

RFID Jewelry Tag



- Model: RC9017-4
- Chip Type: NXP Ucode8/9
- Application: Jewelry Security management/Glasses Control Tracking/Bag Tracking management, etc.
- Dimensions: 68x13mm
- Read Range: 8m



- Model: RC9017-7
- Chip Type: Qstar-71GB/73GB
- Application: Jewelry Security management/Glasses Control Tracking/Bag Tracking management, etc.
- Dimensions: 68x13mm
- Read Range: 7m

RFID Tire Tags



- Model: RC5053
- Material: PET
- Application: Tire tracking/Ruber tracking/Logistics managemen/Assets management, etc
- Dimensions: 100x50mm
- ChipType: NXP Ucode 8/9/9XE
- Read Range: 15m(US)



- Model: RC9020
- Material: Steel wire
- Application: Tire factory control/ Tire asset tracking/ Automobile factory tire tracking,etc
- Weight: 0.4g/0.2g
- ChipType: Alien Higgs 3/9
- Dimensions: 84x1/50x1mm
- Read Range: 2.4m

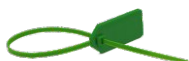


- Model: RC9020-1
- Material: Rubber
- Application: Bus tire tracking/ Truck tire tracking/Automobile factory tire tracking,etc
- Weight: 5.0g
- ChipType: Alien Higgs 3/9
- Dimensions: 95x35x2mm
- Read Range: 1.0m



- Model: RC9020-2
- Weight: 4.7g
- Dimensions: 85x38x2mm
- Material: Rubber
- ChipType: Alien Higgs 3/9
- Read Range: 0.9m
- Application: Bus tire tracking/ Truck tire tracking/Automobile factory tire tracking,etc

UHF Special Tag



- Model: RC9003
- Weight: 6.9g
- Dimensions: 345x28x4.5mm
- Material: ABS/Nylon
- ChipType: NXP Ucode 8/9/9XE
- Read Range: 8.5m
- Application: Asset Tracking/Pallet Management/Food Hygiene Control, etc.



- Model: RCT10001
- Weight:2.4g
- Dimensions: 110x9.6x1.2mm
- Material: FR-4
- ChipType: Impinj Monza 4QT/4E
- Read Range: 13m
- Application: Wooden & Plastic pallet tracking/Non-metal assets management, etc.



- Model: RCT10003
- Weight:2.0g
- Dimensions: 90x10x1mm
- Material: FR-4
- ChipType: NXP Ucode 8
- Read Range: >6.0m
- Application: Wooden & Plastic pallet tracking/Non-metal assets management, etc.



- Model: RCT10002
- Weight:0.3g
- Dimensions: 58x4x1.3mm
- Material: FR-4
- ChipType: Impinj Monza 4QT
- Read Range: >4.8m
- Application: Wooden & Plastic pallet tracking/Non-metal assets management, etc.