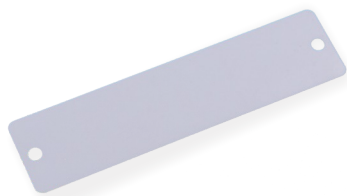




Pallet AIO

85 x 20 x 0.9 mm M830



RAIN UHF RFID Pallet AIO Tag, a cost-effective and versatile solution designed to optimize pallet tracking and inventory management for businesses of all sizes. Made from durable PCV material, their robust structure makes them ideal for applications such as industrial equipment monitoring, production and automation processes, and the management and tracking of wooden or plastic pallets, as well as large wooden or plastic containers.

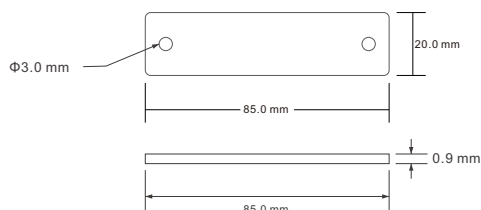
These RFID tags are perfect for large-scale applications where cost and efficiency are paramount. Whether you're managing a bustling warehouse or overseeing a complex logistics network, the UHF RFID Pallet Tag offers the ideal balance of performance and affordability.

Highlights & Benefits

- ✓ Outstanding performance
- ✓ Durable PVC construction for long term usage
- ✓ Multiple mounting options for installation
- ✓ ETSI(865-868 MHz) and FCC(902-928 MHz) optional
- ✓ Customization-design, printing, encoding available

Applications

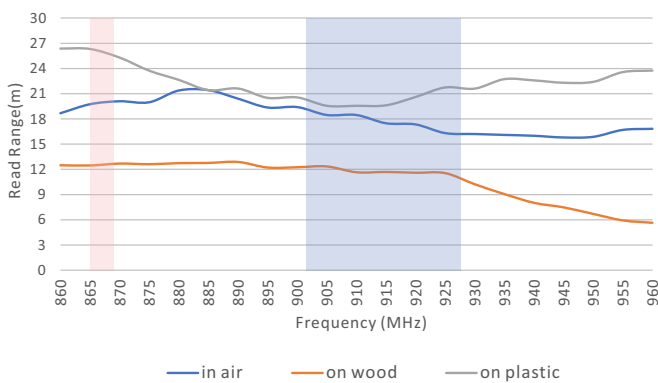
- ✓ Pallet
- ✓ Turnover box
- ✓ Furniture



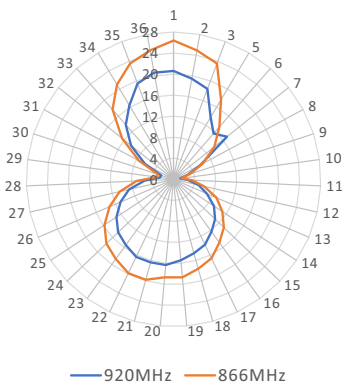
Technical Features

RFID Features	
Model	RC9027-12
Air Interface Protocol	EPC Class 1 Gen 2 / ISO 18000-63 Type C
Frequency	860-960 MHz
Chip Type	Impinj M830
Memory	User - N/A; EPC - 128 bits; TID - 96 bits
Data Storage	> 10 years
Re-write	100,000 times
Read Range(2W ERP)	FCC: > 20.6 m(67.6 ft) , on plastic; > 11.6 m(38.1 ft), on wood ETSI: > 26.0 m(85.3 ft) , on plastic; > 12.5 m(41.0 ft), on wood
Physical Features	
Dimension	85 x 20 x 0.9 mm / 3.35 x 0.79 x 0.04 in
Material	PET/PVC
Weight	2.3 g
Color	White
Operating Temperature	-40°C to 85°C / -40°F to 185°F
Survival Temperature	-40°C to 150°C / -40°F to 302°F
Storage Condition	20±5°C, 50±10% RH, Store away from sunlight
IP Rate	IP68, test for 5 hours at 1m deep water
Other Features	
Installation	Adhesive(clean and dry surface), Rivet, Magnet, Screw
Customization	Printing, Encoding, Design, etc.
Package	200 pcs / bag, 2 bags / box

Read Range(2W ERP)



Radiation Pattern



PS: The performance is theoretical values in the lab and the actual effect depends on the specific applications.

RICHRFID

Web: <https://www.richrfid.com> E-mail: info@richrfid.com
Shenzhen | Hong Kong | Singapore | Seoul | Tokyo | Paris



DISCLAIMER

All specifications are indicative and results may vary. Each user bears full responsibility for making its own determination as to the suitability of RICHRFID products, materials, services, recommendations, or advice for its own particular use.

For intended use only. Not to be repurposed or used for other applications without prior written permission from the manufacturer.

@2026 RICHRFID. All rights reserved.